

Dry Ice Production Catalog of Systems & Accessories

This catalog contains all of Cold Jet's Dry Ice Pelletizer product offerings. All part numbers are included in the catalog. Cold Jet will always ship the latest version of each part. Invoices will always reflect the latest revision level numbers.

Contact us:

USA/Canada +1 513 831 3211 or +1 800 337 9423

info@coldjet.com

Europe +32 (0)13 53 95 47

info.eu@coldjet.com

Germany +49 (0)6551 9606-0

Benelux +32 (0)13 53 95 48

Poland +48 (0)54 237 2716

www.coldjet.com

www.dryiceproduction.com

Business Hours:

Monday through Friday*

8:30 a.m. - 5:00 p.m. local time

**U.S. Customer Service is available 24 hours a day 7 days a week*

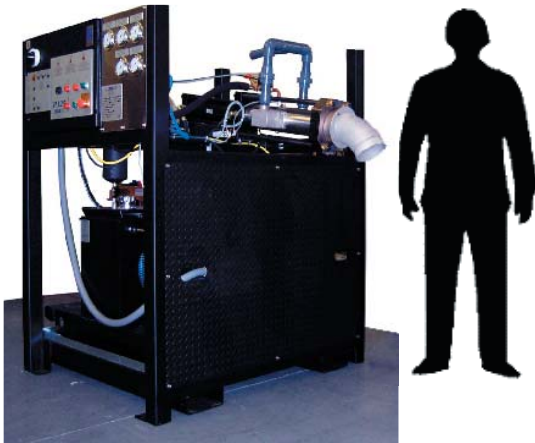
+1 800 777 9101 or +1 513 576 8981

Table of Contents

<i>Pelletizers</i>	5
Overview	6
Features & Benefits	8
P325 Specifications	10
P750 Specifications	11
P1500 Specifications	12
P3000 Specifications	13
Pelletizer Configurations	14
<i>Pelletizer Configuration Table</i>	15
Die Configurations	16
<i>Die Configuration Table</i>	17
Pelletizer Accessories	18
<i>Accessories Table</i>	19
 <i>Integrated Systems</i>	 21
Introduction & Overview	22
Features & Benefits	23
Examples	24
 <i>Warranty, Terms & Conditions</i>	 25
Warranty	26
Terms & Conditions	27

Pelletizers

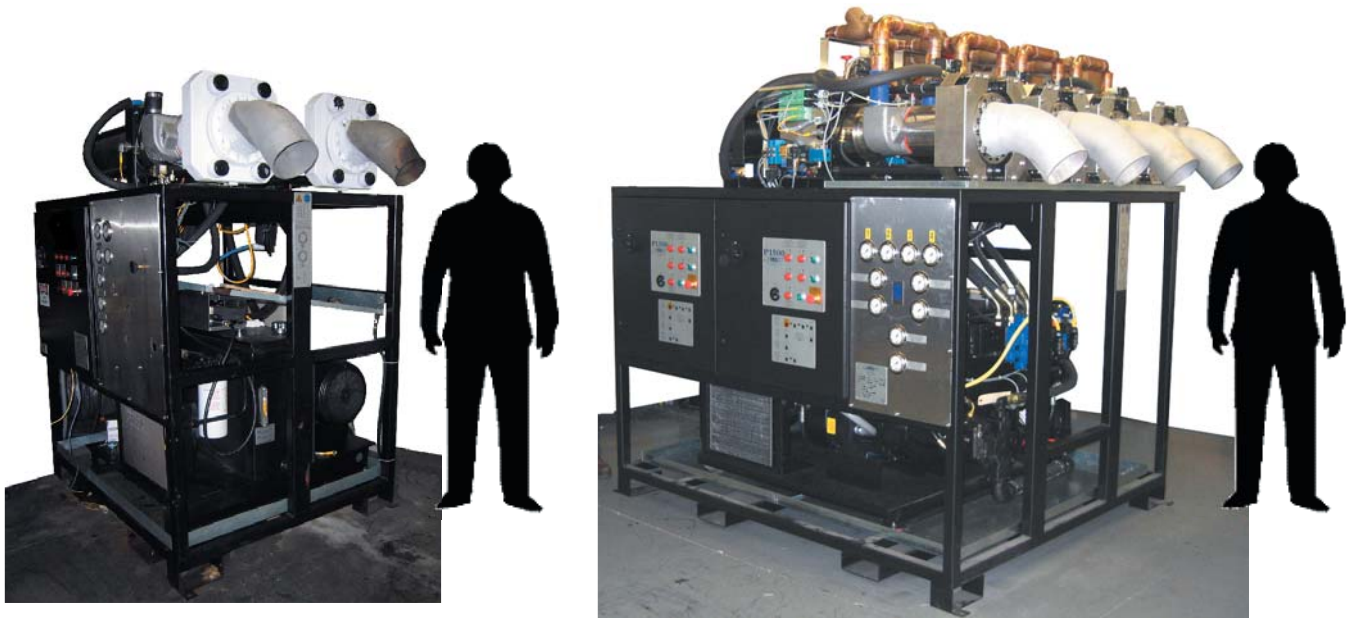
Overview



	P325	P750
Dimensions	W 54" x L 57" x H 64.5"	W 49" x L 84" x H 84"
<i>with chute(s) & exhaust(s)</i>	W 136.3 x L 144.8 x H 163.8 cm	W 124.5 x L 213.4 x H 213.4 cm
Weight	1750 lbs / 795.5 kg	2700 lbs / 1225 kg
Hydraulic Oil (included)	20 gallons / 75.7 liters	30 gallons / 113.6 liters
Average Power Consumption	3.2 kW	6.1 kW
Hydraulic Motor	10 HP	20 HP
Productivity	300 lbs/hr / 136.4 kg/hr	600 lbs/hr / 272.7 kg/hr
Footprint	21.38 sq. ft / 1.986 m ²	28.58 sq. ft / 2.655 m ²

Cold Jet created the first specialized high-density dry ice pelletizers in the mid 1980s to meet the needs of dry ice blasting customers as the 3 mm standard blasting pellet was not available in the marketplace. Today, our Pelletizers stand for exceptional Quality, Reliability and Productivity coupled with Cold Jet's uniquely experienced Service.

Overview



Intro & Overview

	P1500	P3000
Dimensions	W 49" x L 84" x H 84"	W 72" x L 108" x H 88"
<i>with chute(s) & exhaust(s)</i>	W 124.5 x L 213.4 x H 213.4 cm	W 182.9 x L 274.3 x H 223.5 cm
Weight	3725 lbs / 1693 kg	6825 lbs / 3100 kg
Hydraulic Oil (included)	30 gallons / 113.6 liters	85 gallons / 321.8 liters
Average Power Consumption	8.5 kW	14.2 kW
Hydraulic Motor	20 HP	2 x 20 HP
Productivity	1200 lbs/hr / 545.5 kg/hr	2400 lbs/hr / 1090.9 kg/hr
Footprint	28.58 sq. ft / 2.655 m ²	54.00 sq. ft / 5.017 m ²

Cold Jet pelletizers make pellets and nuggets of various sizes that are used in a variety of industry applications. Our expansive made-to-order and customizable product line is easy to implement and will meet every need. And with our ongoing reliability, unique customer service and product innovations, Cold Jet is setting the standard for dry ice production everywhere.

Features & Benefits

Benefits of High-Density dry ice versus “Regular”

- Better transportability
 - *won't break like regular ice (and subsequently clump and sublimate faster)*
- Longer shelf life
 - *While the sublimation rate remains the same, high-density ice will last longer as there are more ice particles per sq. inch*
- Better aggression for blasting

Benefits of Making dry ice versus Buying it

- Eliminate Transport
 - *Eliminate transport costs*
 - *Eliminate sublimation losses during transport*
 - *Maximize shelf life by eliminating transport time*
- Eliminate wasted dry ice
 - *Control consumption: to eliminate dry ice storage sublimation and losses from non use of old ice*
 - *Control dry ice quality: to eliminate potential contamination from outside sources*
 - *“Just In Time” manufacture and use: to eliminate storage space for dry ice totes*

Benefits of Cold Jet versus our Competition

- Maximum productivity in minimum floorspace
- Minimum downtime through product reliability and design
 - *Open frame design allows easy access to component parts*
 - *Highest quality components are resistant to continuous use in harsh environments*
- Exceptionally consistent and uniform quality dry ice media
- 24-hour Customer Service provided by leading industry experts

Features & Benefits

All Pelletizers feature the following:

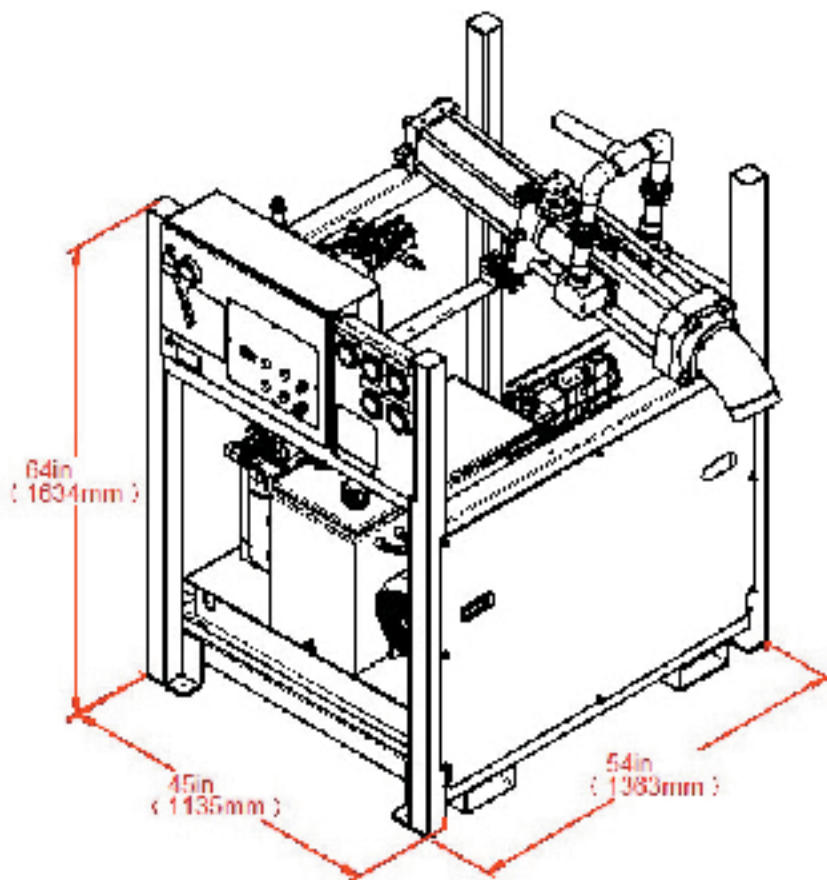
<i>Feature</i>	<i>Benefit</i>
All welded steel frame and highest quality components and materials	Robustness, Longevity and reliability for minimal downtime and maintenance costs
Open frame design	Easy access to components for maintenance and repair
Simple and easy operator controls 	<ul style="list-style-type: none"> • One-button operation • Automated start up and shut down • No extensive operator training required
Technologically optimized dies 	Maximum output volume, uniformity and density 
Cold Jet Customer Service	Global availability of industry experts with the broadest and most unique experiences and know-how

Features & Benefits

The P325



Single cylinder P325
Part# 2A0149



Specifications

Dimensions (*with chute and exhaust*)

W 54" x L 57" x H 64.5"

W 136.3 x L 144.8 x H 163.8 cm

Construction

All welded steel

Weight

1750 lbs / 795.5 kg

Hydraulic Oil (*included*)

20 gallons / 75.7 liters

Avg Power Consumption

3.2 kW

Hydraulic Motor

10 HP

Production Output

300 lbs/hr / 136.4 kg/hr

Footprint

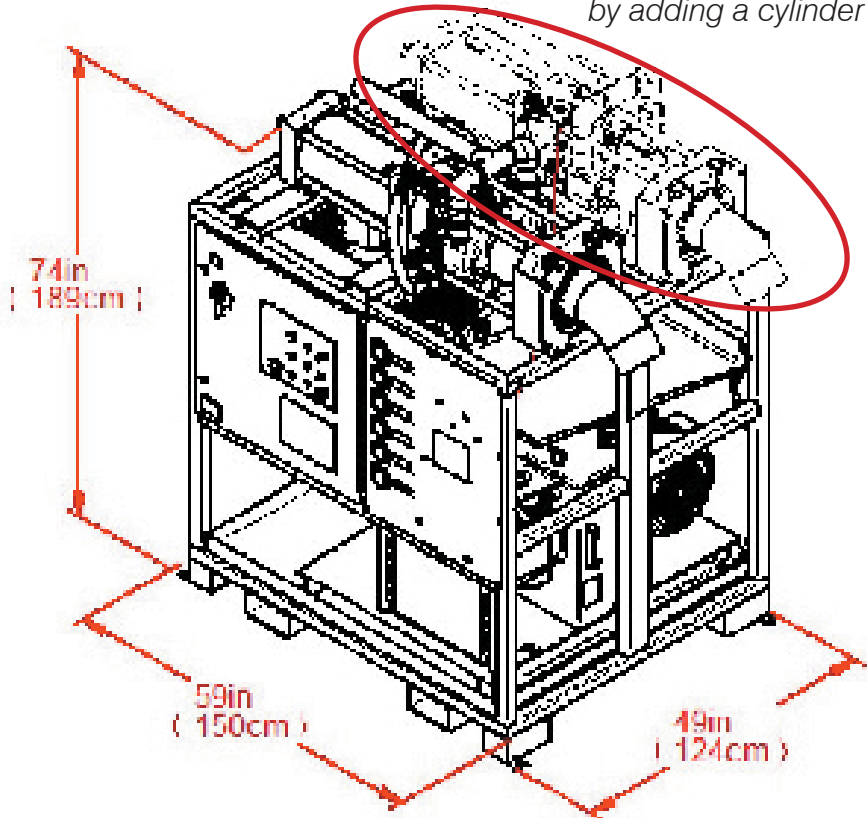
21.38 sq. ft / 1.986 m²

The P750

The P750 is upgradeable to a P1500 by adding a cylinder



Single cylinder P750
Part# 2A0154-G3



P325 & P750

Specifications

Dimensions (with chute and exhaust)

W 49" x L 84" x H 84"

W 124.5 x L 213.4 x H 213.4 cm

Construction

All welded steel

Weight

2700 lbs / 1225 kg

Hydraulic Oil (included)

30 gallons / 113.6 liters

Avg Power Consumption

6.1 kW

Hydraulic Motor

20 HP

Production Output

600 lbs/hr / 272.7 kg/hr

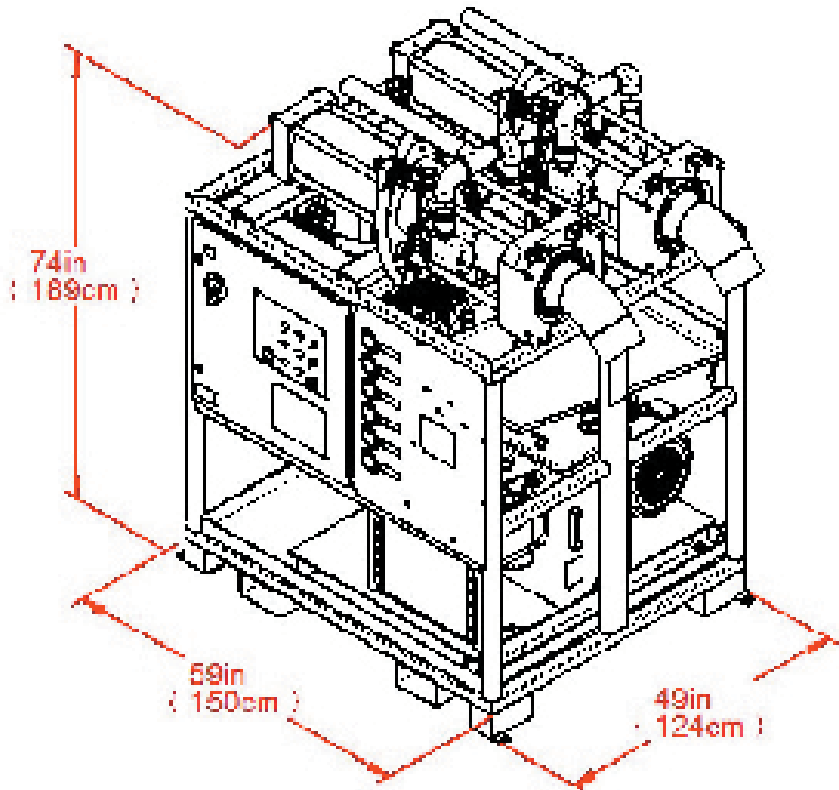
Footprint

28.58 sq. ft / 2.655 m²

The P1500



Two cylinder P1500
Part# 2A0154-G1



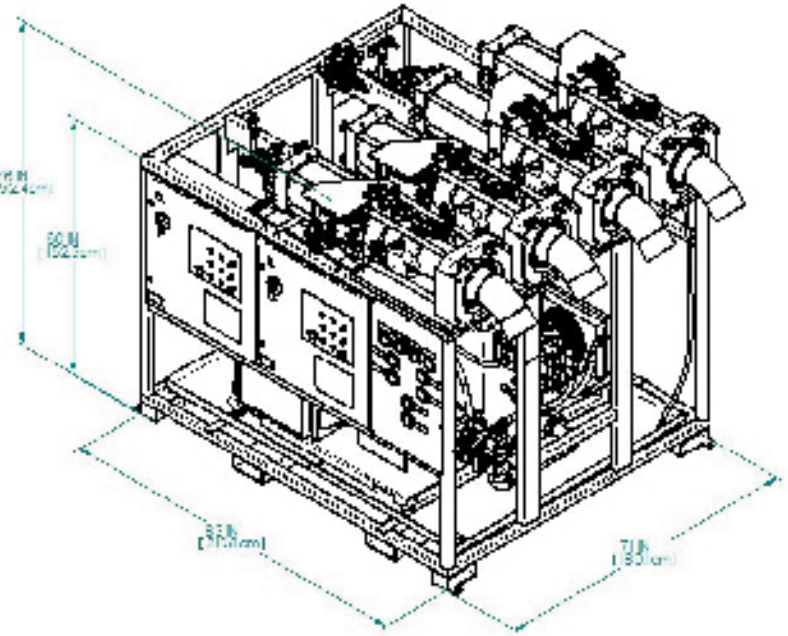
Specifications

Dimensions (<i>with chutes and exhausts</i>)	W 49" x L 84" x H 84" W 124.5 x L 213.4 x H 213.4 cm
Construction	All welded steel
Weight	3725 lbs / 1693 kg
Hydraulic Oil (<i>included</i>)	30 gallons / 113.6 liters
Avg Power Consumption	8.5 kW
Hydraulic Motor	20 HP
Production Output	1200 lbs/hr / 545.5 kg/hr
Footprint	28.58 sq. ft / 2.655 m ²

The P3000



Four cylinder P3000
Part# 2A0147



P1500 & P3000

Specifications

Dimensions (<i>with chutes and exhausts</i>)	W 72" x L 108" x H 88" W 182.9 x L 274.3 x H 223.5 cm
Construction	All welded steel
Weight	6825 lbs / 3100 kg
Hydraulic Oil (<i>included</i>)	85 gallons / 321.8 liters
Avg Power Consumption	14.2 kW
Hydraulic Motor	2 x 20 HP
Production Output	2400 lbs/hr / 1090.9 kg/hr
Footprint	54.00 sq. ft / 5.017 m ²

Pelletizer Configurations

All pelletizers come with standard configuration items installed. You can also select from several available substitutions and options (installed upon request). The photos below are representative of standard and available configuration items. Please refer to the Pelletizer Configuration table for complete availability.

Standard items (installed):

Standard PLC (Mitsubishi)



Standard Exhaust



Standard Hydraulic Oil
DTE 13M



Options (replace standard upon request):

Vapor Recovery Manifold



Food Grade Hydraulic Oil
DTE FM 32



Quick Die Change (QDC)
Chute



Pelletizer Configurations

Configuration

Standard Items (installed)

- Standard PLC (Mitsubishi)
- Standard Exhaust
- Standard Exhaust
(1 unit) P750
(2 units) P1500
(4 units) P3000
- Standard Hydraulic Oil DTE 13M
(20 gallons) P325
(30 gallons) P750 and P1500
(85 gallons) P3000

Part #	P325	P750	P1500	P3000
4G1315	◆	◆	◆	◆
2N0161	◆			
2N0176		◆	◆	◆
4F0010	◆	◆	◆	◆

Options (installed upon request)

- Other PLC
(to be specified at time of order)
- Vapor Recovery Manifold
- Vapor Recovery Manifold
- Vapor Recovery Manifold
(1 units) P1500
(2 units) P3000
- Food Grade Hydraulic Oil DTE FM 32
(20 gallons) P325
(30 gallons) P750 and P1500
(85 gallons) P3000
- Quick Die Change (QDC) Chute

<i>call</i>	◆	◆	◆	◆
2N0162	◆			
2N0185-G2		◆		
2N0185-G1			◆	◆
4F0150	◆	◆	◆	◆
2T0038		◆	◆	◆

Other Available Options

- Winterization Kit
Includes: A water heater element (cal rod),
thermostat and electrical box.
(Part # determined by voltage)
- 12 in/30.5cm Riser
- 12 in/30.5cm Riser

<i>call</i>	◆	◆	◆	◆
2K0137	◆			
2K0161		◆	◆	

Die Configurations

All pelletizers come with a standard die assembly installed (see note next page*) and your choice of chute or pellet cutter (for 3mm pellets only) to be specified at the time of order. The photos below are representative of standard and available dies. Please refer to the Die Configuration table for complete availability.

Standard Die configurations:

1/8" (3mm) pellet die assembly with chute



1/8" (3mm) pellet die assembly with cutter



1/4" (6mm) nugget die assembly with chute
(P325 only)



1/4" (6mm) nugget die with chute



3/8" (9mm) nugget die assembly with chute
(P325 only)



3/8" (9mm) nugget die with chute



1/2" (12mm) nugget die assembly with chute
(P325 only)



1/2" (12mm) nugget die with chute



5/8" (16mm) nugget die with chute



3/4" (19mm) nugget die with chute



Die Configurations

Note: the P325 and P750 each use one (1) die. The P1500 uses two (2) dies and the P3000 uses four (4) dies. In the case of the P1500 and the P3000 you may choose any combination of available dies sizes to be installed on your pelletizer.

Configuration

P325 Dies

- 1/8" (3mm) pellet die assembly with chute
- 1/8" (3mm) pellet die assembly with cutter
- 1/4" (6mm) nugget die assembly with chute
- 3/8" (9mm) nugget die assembly with chute
- 1/2" (12mm) nugget die assembly with chute
- 5/8" (16mm) nugget die with chute

Part #	P325	P750	P1500	P3000
2D0077-G5	◆			
2D0077-G6	◆			
2D0077-G7	◆			
2D0077-G8	◆			
2D0077-G9	◆			
2D0077-G10	◆			

P750/P1500/P3000 Dies

- 1/8" (3mm) pellet die assembly with chute
- 1/8" (3mm) pellet die assembly with cutter
- 1/4" (6mm) nugget die with chute
- 3/8" (9mm) nugget die with chute
- 1/2" (12mm) nugget die with chute
- 5/8" (16mm) nugget die with chute
- 3/4" (19mm) nugget die with chute

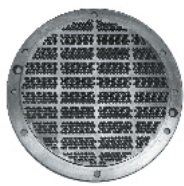
2D0065-G5		◆	◆	◆
2D0065-G6		◆	◆	◆
2D0065-G7		◆	◆	◆
2D0065-G8		◆	◆	◆
2D0065-G9		◆	◆	◆
2D0065-G10		◆	◆	◆
2D0065-G11		◆	◆	◆

- * die assemblies for P325 include die plate and backing block, except for one-piece 5/8" die
- * die assemblies for P750/P1500/P3000 are all one-piece, except for 3mm plate which requires backing block
- * Quick Die Change (QDC) Chute can be substituted for the standard chute on any die assembly for the P750/P1500/P3000

Pelletizer Accessories

We have many pelletizer accessories available to meet your needs, including a wide range of pellet/nuggets dies (additional sizes not mentioned here may be available upon request).

The photos below are representative of available items. Please refer to the Accessory table for complete availability and applicability.



1/8" (3mm) Pellet
Die Plate



1/8" (3mm) Pellet
Die Assembly



3/8" (9mm) Nugget
Die Plate



5/8" (16mm) Nugget
Die Plate



3/4" (19mm) Nugget
Die Plate



Backing Block
(3mm)



Stainless Steel Chute



Quick Die Change
(QDC) Chute



Pellet Cutter
Assembly



Vapor Recovery Manifold

Food Grade Hydraulic Oil



Pelletizer Accessories

Accessory

Hardware

- 1/8" (3mm) pellet die plate
- 1/8" (3mm) pellet die assembly
- 1/4" (6mm) nugget die (one-piece)
- 3/8" (9mm) nugget die plate
- 3/8" (9mm) nugget die assembly
- 1/2" (12mm) nugget die plate
- 1/2" (12mm) nugget die assembly
- 1/8" (3mm) pellet die plate
- 1/8" (3mm) pellet die assembly
- 1/4" (6mm) nugget die plate
- 3/8" (9mm) nugget die plate
- 1/2" (12mm) nugget die plate
- 5/8" (16mm) nugget die plate
- 3/4" (19mm) nugget die plate
- Backing Block
- Backing Block (3mm only)
- Pellet Cutter Assembly
- Stainless Steel Chute
- Stainless Steel Chute
- Quick Die Change (QDC) Chute
- Quick Die Change (QDC) Toolkit
- Quick Die Change Toolkit
- Vapor Recovery Manifold (1 unit)
- Vapor Recovery Manifold (1 unit)
- Vapor Recovery Manifold (1 unit)
Note: 1 required for P1500; 2 for P3000

Part #	P325	P750	P1500	P3000
3D0248	◆			
TBD	◆			
3D0268	◆			
3D0262	◆			
TBD	◆			
3D0270	◆			
TBD	◆			
3D0202		◆	◆	◆
TBD		◆	◆	◆
3D0293		◆	◆	◆
3D0301		◆	◆	◆
3D0302		◆	◆	◆
3D0277	◆	◆	◆	◆
3D0295		◆	◆	◆
3D0249	◆			
3D0220		◆	◆	◆
2D0051	◆	◆	◆	◆
3D0262	◆			
3D0236		◆	◆	◆
2T0038		◆	◆	◆
2T0036		◆	◆	
2T0037				◆
2N0162	◆			
2N0185-G2		◆		
2N0185-G1			◆	◆

Service and Maintenance

- Operator Information Kit
(1 kit is included with pelletizer unit)
Includes: Book with Installation Standards,
Operator Manual, Troubleshooting Guide,
SafetyGuide and Operator CD
- Spare Parts Kit
- Spare Parts Kit
- Site Inspection (one day)
- Installation & Operator training (2 days)
- Preventative Maintenance Training (2 days)

2W0283	◆	◆	◆	◆
80313-001	◆			
80316-001		◆	◆	◆
<i>call</i>	◆	◆	◆	◆
<i>call</i>	◆	◆	◆	◆
<i>call</i>	◆	◆	◆	◆

Consumables

- Standard Hydraulic Oil
- Food Grade Hydraulic Oil

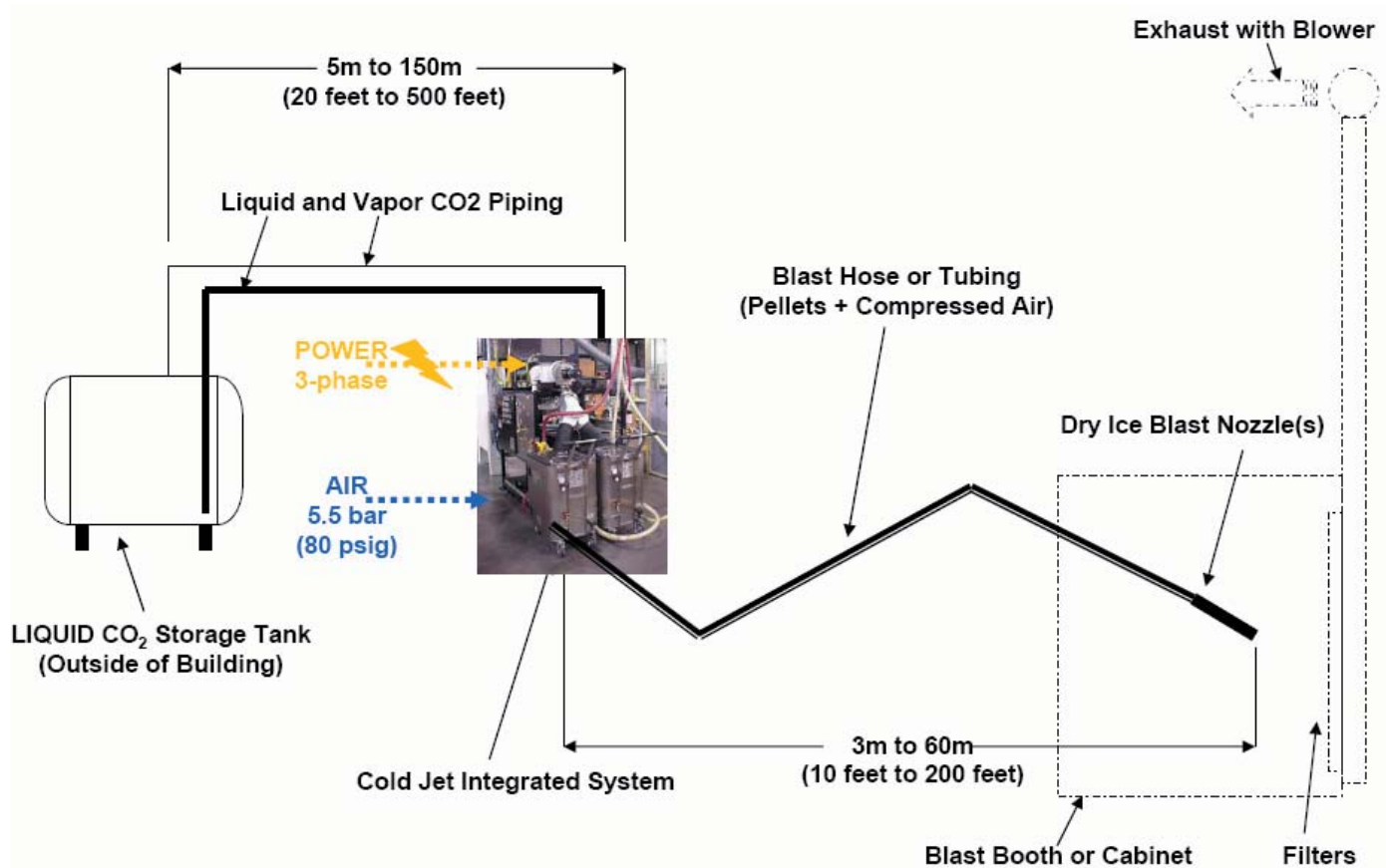
4F0010	◆	◆	◆	◆
4F0150	◆	◆	◆	◆

Integrated Systems

Introduction & Overview

Cold Jet Integrated Systems combine and interface a Cold Jet Pelletizer with one or more AeRO Series blasting systems and provide for continuous, uninterrupted, completely automated operations. Each Cold Jet Integrated System is custom engineered to meet specific customer requirements. Cold Jet has the unique capability to act as either a Prime Contractor or a Sub-Contractor in the designing, installing and supporting of a complete manufacturing work cell, which may include not only the Cold Jet Integrated System, but also flexible automation, collection and containment systems and other production line interfaces. We have installed and supported Integrated Systems in the Semiconductor Processing Industry, the Copier Machine Industry, the Tire Industry, the Automotive OEM and Aftermarket Parts Industry and the Aerospace Industry.

Fig 1: Simplified Integrated Dry Ice Blasting System



Features & Benefits

Features

- Ability to run multiple nozzle stations
- Fully automated - no interruption of work to fill machine with dry ice pellets
- Works with robots or manual blasting
- Ideal for integration with production line
- Operating pressure up to 300 psi (20.7 bar)

(Pressure relief valve will be set at 140 psi (9.7 bar) unless otherwise specified)

Option

- Control system (Allen-Bradley, Siemens, Telemecanique)

Benefits

- “Just In Time” blast pellet manufacture and use means no pellet storage or handling is required:
 - *Elimination of floor space requirements for pellet storage totes*
 - *Elimination of any potential dangers of handling dry ice pellets*
- “24/7/365” operation:
 - *Completely automatic system works without human intervention*
 - *Proven robust and reliable - maintenance costs and production downtime are minimized*
- Perfect compliment to factory automation: Integrated Systems are easy to connect to and control from cell controllers (PCs or PLCs), robot controllers, etc.
- Process consistency and reliability:
 - *Elimination of “human error”*
 - *Fixed process settings (dry ice consumption, air pressure and flow, part-to-part cleaning time, etc.) means the elimination of the inconsistencies that can accompany manual blasting*
- Reduced manual labor and associated costs:
 - *Reduction of total wages, benefits, overhead burden rate, etc.*
 - *Automation frees up generally less skilled workers for other tasks and allows for skills upgrades of technical and maintenance staff*

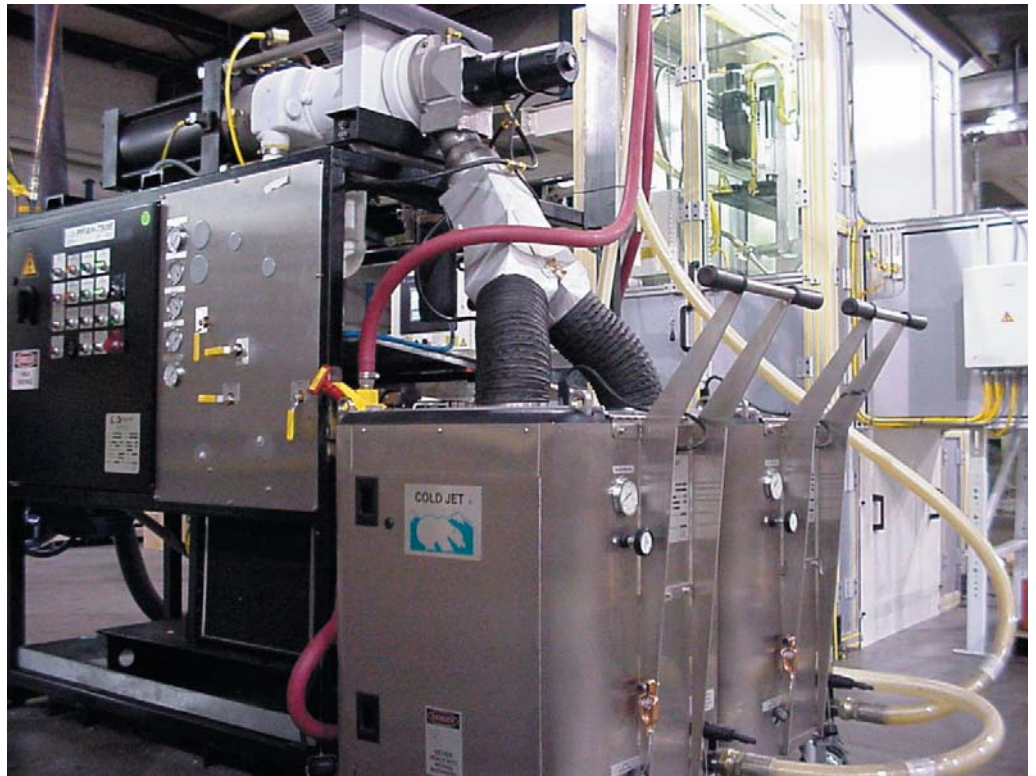
Note: An Integrated System is the ONLY way to use 1 mm pellets as these are too small and fragile to be stored or transported - these must be used immediately upon production

Examples



Left: P1500 equipped with two flow dividers and two pellet chopper assemblies (3 mm pellets only) providing a total of 4 dry ice pellet outlets.

Right: P750 with two AeRO 75 predecessor blasting systems. The blasting takes place in the blasting cabinet to the right of the integrated system.



Warranty, Terms & Conditions

Warranty

Cold Jet, LLC® (“CJ”) warrants its products (“Equipment”) provided under this Agreement to be free from defects in materials and workmanship for a period of twelve months (90 days for used equipment), under normal use, maintenance and service as stipulated in the Operator’s Manual. CJ warrants that the equipment will be in good working order on the Date of Shipment and that they will conform to CJ’s official published specifications.

The warranty period is twelve months (90 days for used equipment) for CJ manufactured Equipment. Original Equipment Manufacturers’ warranties provided by CJ on equipment purchased under this Agreement not manufactured by CJ will be passed through to the Buyer. The warranty period commences on the Date of Shipment of the Equipment.

CJ’s liability is limited to repairing or replacing, at its option, any covered part of its Equipment which CJ has determined to be defective. Said repair or replacement will be made by CJ or its authorized representative free of charge to the Buyer, except for any freight or travel expenses, during the warranty period. Any replaced part will become the property of CJ. If, after repeated efforts, CJ is unable to restore its Equipment to good working order, or to replace the defective parts, all as warranted, CJ may replace the Equipment in its entirety at its discretion. Any claim must be made in writing to CJ within 30 days after the defect is discovered and any claim not made within that period shall be deemed waived or released and denied.

The suitability of the equipment for the purpose intended is not included in the warranty.

This warranty shall not apply and CJ shall not be responsible nor liable for:

- a) Consequential, collateral or special losses or damages;
- b) Equipment conditions caused by abnormal conditions of use, accident, neglect or misuse of Equipment, improper storage or damages resulting during shipment as determined by CJ;
- c) The replacement of normal wear items, including but not limited to air and blast hoses;
- d) Deviation from the Equipment’s prescribed maintenance programs, replacement parts, operating instructions, specifications or other terms of sale;
- d) Labor charges, loss or damage resulting from improper operation, maintenance or repairs made by person (s) other than CJ or CJ’s authorized service representative;
- f) Improper application of the product.

In no event shall CJ be liable for claims, whether arising from breach of contract or warranty of claims of negligence or negligent manufacture, in excess of the purchase price.

THIS WARRANTY IS THE SOLE WARRANTY OF CJ AND ANY OTHER WARRANTIES, EXPRESS, IMPLIED IN LAW OR IMPLIED BY FACT, INCLUDING ANY WARRANTIES OF MERCHANTABILITY AND FITNESS FOR PARTICULAR USE, ARE HEREBY SPECIFICALLY EXCLUDED.

Terms & Conditions

Orders, offers and documentation

All orders made by the Customer are subject to acceptance by Cold Jet.

Unless otherwise specified in the offer, an offer by Cold Jet is valid for 30 days. The technical specifications and all of the information contained in Cold Jet's catalogs and brochures are provided for information purposes only and may be changed at any time by Cold Jet.

Payment Terms

Based on Cold Jet credit approval, payment terms for pelletizers and integrated systems are as follows:

- Machine Orders:
 - One third (1/3) of total invoice to be paid at the time of the order
 - One third (1/3) of total invoice to be paid upon completion of manufacture
 - One third (1/3) of total invoice to be paid net thirty (30) days after invoice date

If an invoice is required for the first and second payments it should be requested at the time of order.

- Spare Parts Orders:
 - Net thirty (30) days after invoice date
- Customer Service:
 - Net thirty (30) days after invoice date

Finance Charges

For all amounts not paid according to the terms above (or according to other specific terms approved by Cold Jet, LLC in writing), Cold Jet, LLC will invoice a finance charge in the amount of one and one half percent (1.5%) per month on the unpaid balance. The Customer agrees to Cold Jet, LLC's selling terms and agrees to pay according to Cold Jet, LLC's payment terms. The Customer agrees to pay finance charges on past due balances.

Since 1986, Cold Jet has led the development of dry ice blasting and dry ice production technology, setting the standard for quality, performance and reliability. With thousands of installed customers worldwide, Cold Jet's success has been the result of its superior technology, dedication to customer service and its establishment of a global infrastructure for product support. Cold Jet is committed to developing dry ice solutions for the betterment of industry and the environment through a relentless pursuit of technology.



Ask us about our Dry Ice Blasting product line or visit us on the web at
www.coldjet.com